



ingen orthopedics
orthopaedic ingenuity



Reverse Shoulder *Product Features*

Proven Technology

Humeral Stems

4 Proximal Fins

Provide for maximum rotational stability while minimizing bone loss

Multiple Suture Holes

Aids in tuberosity reconstruction and fixation for fracture repairs

Proximal On-Growth Surface

Carborundum blast texturization for enhanced surface fixation

Smooth Distal Stems

Minimizes stress shielding of the proximal humerus

Reduced Collar

Increases visibility of stem to bone interface

Reverse Morse Taper

Designed for enhance access to the glenoid fossae

Distal Flutes

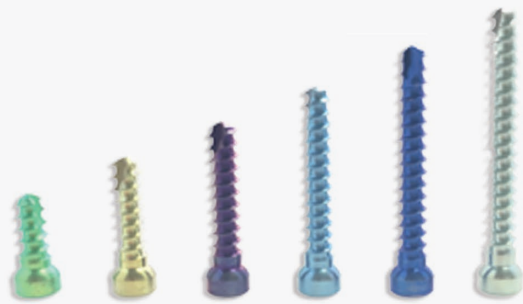
Allow for medullary revascularization and rotational stability

Stem Diameters

6mm, 8mm, 10mm, and 12mm (Standard)
8mm, 10mm, and 12mm (Revision)

Stem Lengths

100mm, 110mm, 120mm, and 125mm (Standard)
190mm, 200mm, and 210mm (Revision)



Peripheral Screws

Polyaxial Compression Screws

Self-tapping 4.5mm bone screws with 12° of angulation

Screw Lengths

15mm, 20mm, 25mm, 30mm, 35mm, and 40mm

Reproducible Results

Humeral Cups & Poly Inlays

12° Angle

Making the scapular neck-humeral shaft angle 147°

+9mm Option

Allows for an increase in lateralization and height of the prosthesis

Morse Taper Fixation

Designed to mate with the Humeral Stems

Centered and Retentive Options

Retentive Inlays designed with a 2.4mm deeper cup to provide additional joint stability

Poly Inlay Thicknesses

0mm, 3mm, and 6mm

Poly Inlay Diameters

36mm and 40mm



Metaglène Plates

Primary Vault Fixation

Through a 9mm Cannulated Central Screw

Morse Taper Trunion

Designed to mate with Reverse Glenosphere

Four Peripheral Scerw Holes

Provide resistance to shear and torsional forces

Titanium Plasma Coated

To aid and facilitate bony ingrowth



Reverse Glenospheres

Reverse Morse Taper:

Designed to mate with the Metaglène Plate

Recessed Glenosphere Screw

For added security of fixation

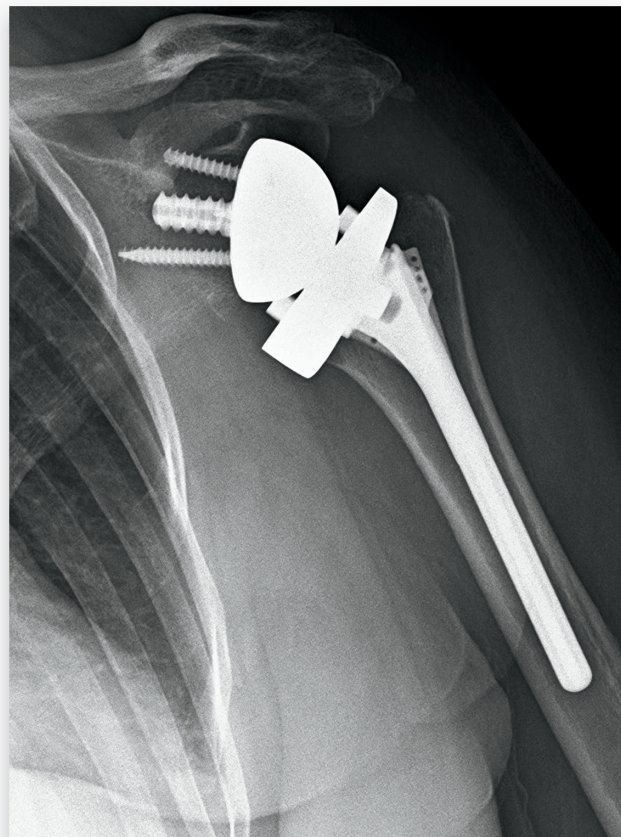
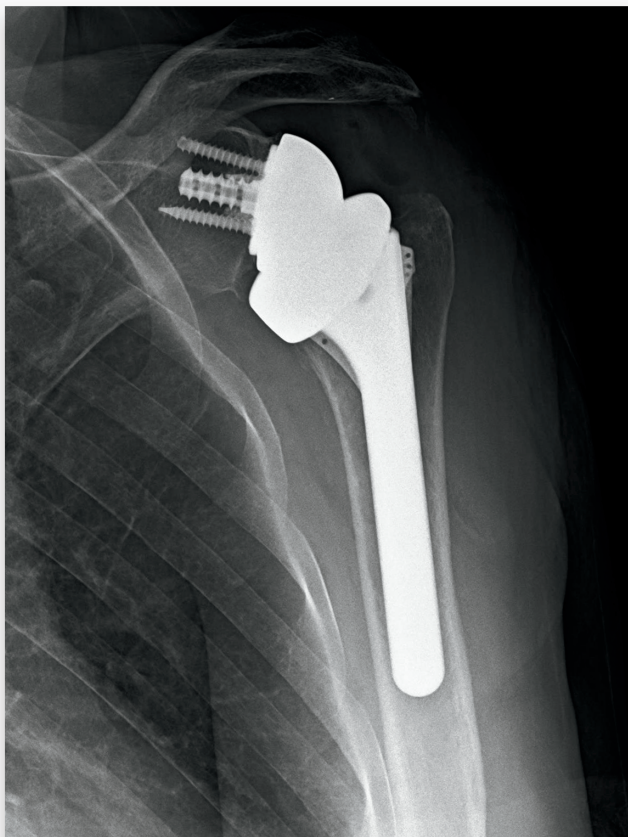
1mm Clearance Gap

Between the glenosphere and bottom of the metaglène plate

Glenosphere Options

Standard, +4mm, and Eccentric





A surgeon should rely exclusively on his or her own professional medical judgment when deciding which product to use when treating a patient. Ingen Orthopedics does not prescribe medical advice and advocates that surgeons be trained in the use of any particular product before using it in surgery. Content presented here is intended to product label and/or instructions for use before using any Ingen Orthopedics product. Contact an Ingen Orthopedics representative if you have questions about Ingen Orthopedics products.



Ingen Orthopedics, LLC
2650 US Highway 130
Suite C
Cranbury, NJ 08512
USA
T: (609) 409-3316
F: (609) 409-3317

www.ingenortho.com

